

The impact of new tuberculosis diagnostics on transmission: why context matters

Hsien-Ho Lin,^a David Dowdy,^b Christopher Dye,^c Megan Murray^d & Ted Cohen^e

Objective To estimate the impact of new tuberculosis diagnostics on tuberculosis transmission given the complex contextual factors that can lead to patient loss before diagnosis or treatment.

Methods An epidemic model of tuberculosis specifying discrete steps along the tuberculosis diagnostic pathway was constructed. The model was calibrated to the epidemiology of tuberculosis and human immunodeficiency virus (HIV) infection in the United Republic of Tanzania and was used to assess the impact of a new diagnostic tool with 70% sensitivity for smear-negative pulmonary tuberculosis. The influence of contextual factors on the projected epidemic impact of the new diagnostic tool over the decade following introduction was explored.

Findings With the use of smear microscopy, the incidence of tuberculosis will decline by an average of 3.94% per year. If the new tool is added, incidence will decline by an annual 4.25%. This represents an absolute change of 0.31 percentage points (95% confidence interval: 0.04–0.42). However, the annual decline in transmission with use of the new tool is less when existing strategies for the diagnosis of smear-negative cases have high sensitivity and when symptomatic individuals delay in seeking care. Other influential contextual factors include access to tuberculosis care, patient loss before diagnosis, initial patient default after diagnosis and treatment success rate.

Conclusion When implementing and scaling up the use of a new diagnostic tool, the operational context in which diagnosis and treatment take place needs to be considered.

Abstracts in [عربي](#), [中文](#), [Français](#), [Русский](#) and [Español](#) at the end of each article.

Introduction

New tools for the diagnosis of tuberculosis have been developed over the past 10 years. All of them offer improved diagnostic accuracy over traditional sputum smear microscopy and several promise to detect the most diagnostically challenging types of tuberculosis, including multidrug-resistant tuberculosis and tuberculosis in patients with human immunodeficiency virus (HIV) infection.^{1–3} One such tool, the Xpert MTB/RIF assay, is an automated nucleic acid amplification test that has greater than 70% sensitivity in detecting smear-negative, culture-positive tuberculosis and can be used nearer to the point of care by individuals with little training.^{4,5} Other new tools, including fluorescent microscopy, loop-mediated isothermal amplification assays and line probe assays, also have promising applications.^{6–8} Evidence on the accuracy of these new diagnostics has rapidly accumulated from clinical validation and field demonstration studies. These data have been used to support the implementation and rollout of new diagnostic tools in several low-income countries with the hope of reducing the burden of tuberculosis and providing cost-effective screening options for policy-makers.³

For a novel diagnostic test to have population-level impact on the control of tuberculosis, improved accuracy is necessary but not sufficient. Tuberculosis transmission depends directly on the length of time patients remain infectious before they are treated. A diagnostic tool that improves detection only late in the course of disease may prevent death, but its impact

on transmission will be small. The expected epidemiological impact of implementing a new diagnostic test will also vary with the rates of case detection and treatment success in the existing tuberculosis control system. If deployed in a clinic where tuberculosis cases are already being detected with high sensitivity (e.g. through the use of high-quality diagnostics), the new tool will have a much lower incremental impact than if it is deployed in a clinic where tuberculosis is frequently missed. Similarly, if the diagnosis of tuberculosis is not followed by prompt and effective treatment, the impact of a new diagnostic test will be small.

For tuberculosis control to be effective, every patient must navigate a complex diagnostic pathway.^{9,10} This pathway, which begins only when an individual presents at a local health centre, involves a series of steps: a clinician suspects tuberculosis, orders the appropriate diagnostic test, receives the results of this test, makes the appropriate diagnosis, places the patient on an effective treatment regimen and ensures the completion of therapy. The accuracy of a diagnostic test affects this pathway at a critical moment, but the loss of patients at any step along the diagnostic pathway, which can be substantial, limits the epidemiologic impact of any new diagnostic tool.⁹

We hypothesized that several contextual factors will affect the capacity of a new diagnostic tool to reduce the burden of tuberculosis. To evaluate and quantify the relative influence of these factors on the potential epidemiologic impact of a new diagnostic test, we developed a mathematical model of a tuberculosis epidemic that captures the complex patient pathway involved in tuberculosis diagnosis and treatment.

^a Institute of Epidemiology and Preventive Medicine, National Taiwan University, 17 Xuzhou Road, 100 Taipei, Taiwan, China.

^b Department of Epidemiology, Johns Hopkins Bloomberg School of Public Health, Baltimore, United States of America (USA).

^c HIV/AIDS, Tuberculosis, Malaria and Neglected Tropical Diseases Cluster, World Health Organization, Geneva, Switzerland.

^d Department of Epidemiology, Harvard School of Public Health, Boston, USA.

^e Division of Global Health Equity, Brigham and Women's Hospital, Boston, USA.

Correspondence to Hsien-Ho Lin (e-mail: hsienho@ntu.edu.tw).

(Submitted: 18 December 2011 – Revised version received: 29 June 2012 – Accepted: 2 July 2012 – Published online: 16 July 2012)

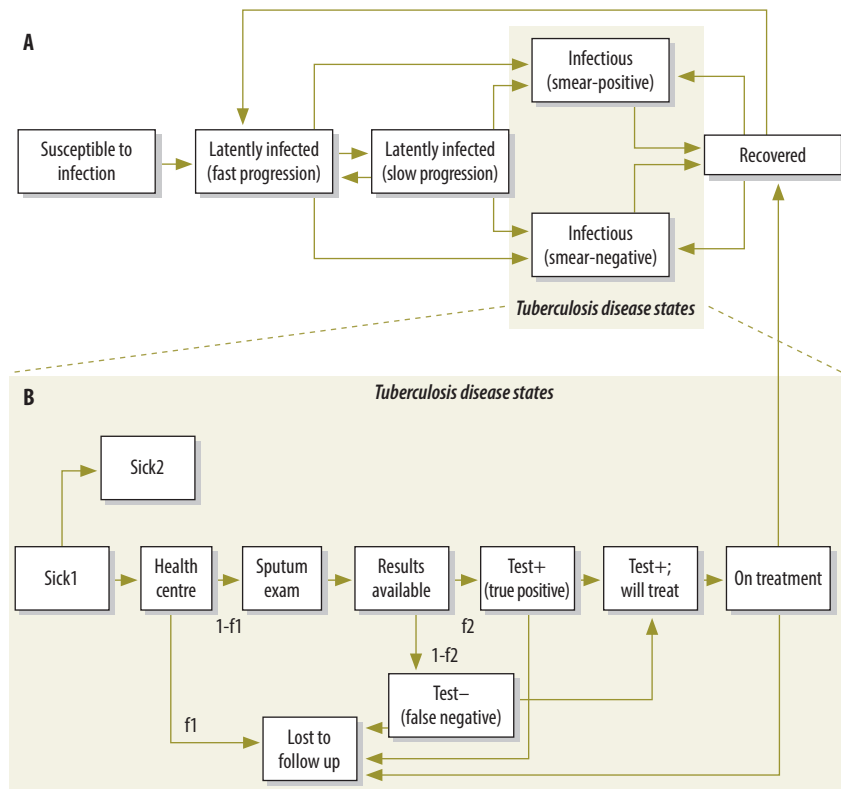
Methods

Using an age-structured epidemic model of tuberculosis transmission, we compared the potential impact of the existing diagnostic algorithms using smear microscopy with that of a hypothetical new tool that replaced smear microscopy in the algorithm. The existing standard approach requires performing three initial sputum smear examinations in people suspected of having pulmonary tuberculosis. For those whose smear is negative, the diagnosis is based on a chest X-ray, a trial of broad-spectrum antibiotics and clinical judgment. The new tool was assumed to have a sensitivity of 100% for highly infectious cases (defined as smear-positive under ideal laboratory conditions) and of 70% for less infectious cases (defined as smear-negative).^{4,5} We constructed the model to reflect an existing diagnostic algorithm to make it possible to assess the influence of operational factors on the epidemiologic impact of the new tool. The operational factors considered in the analysis were: (i) access to tuberculosis care, defined by the proportion of the population able to enter the health-care system upon contracting tuberculosis; (ii) duration of patient delay, defined as the time from the onset of symptoms until entry into the health-care system; (iii) diagnostic default, defined as the loss of a patient to follow-up before completion of the diagnostic procedure; (iv) sensitivity of the secondary diagnostic tool (if the initial test result is negative); (v) initial default, defined as the loss of a patient to follow-up after being informed of a positive test result but before treatment initiation; (vi) treatment success, defined by treatment completion and cure.

Expanded epidemic transmission model

Ours is a compartmental model that follows conventions adopted for previous epidemic models of major anti-tuberculosis interventions^{11,12} and prior models of tuberculosis diagnostics.^{13–16} The model divides the population into compartments based on tuberculosis disease status (Fig. 1), HIV status (positive/negative) and age. Since the diagnostic pathway begins after the onset of disease, we further expanded disease states to incorporate important steps in the diagnostic pathway (Fig. 1). This

Fig. 1. Graphical representation of the expanded epidemic model used to study the impact of new tuberculosis diagnostics on transmission



f_1 , relative impact of other factors along the diagnostic pathway; f_2 , impact of increased diagnostic sensitivity as one step in this pathway.

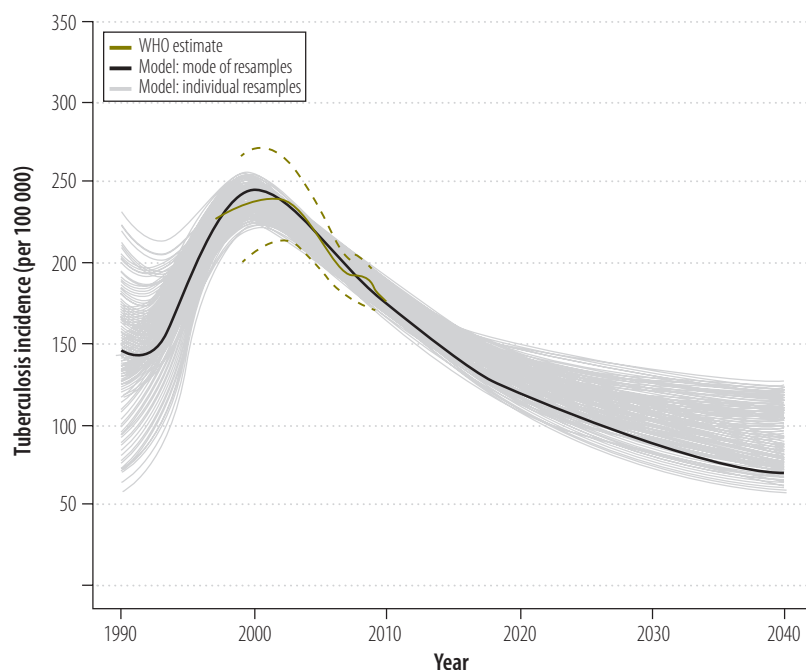
Note: Part A shows a structure similar to that of previous tuberculosis transmission models. This figure does not show additional model stratification based on age and human immunodeficiency virus infection status. Part B shows expansion of the simple standard tuberculosis transmission model, through addition of more patient diagnostic pathways, to investigate the effect of a diagnostic tool within the operational context. See Appendix A for a detailed description of model compartments and rate transitions between compartments.

expanded model enables detailed study of the diagnostic process in the context of a transmission modelling framework. It makes it possible to explicitly investigate the impact of increased diagnostic sensitivity as one step in this pathway (i.e. by changing the relative size of flows to “test+” versus “test-” f_2 in Fig. 1 and Fig. A1 in Appendix A, available at: <https://www.dropbox.com/s/ts9yt1uop8006wv/Appendix%20A.docx.zip>), as well as the relative impact of other factors along the diagnostic pathway (e.g. reduced loss to follow-up resulting from more rapid diagnosis: f_1 in Fig. 1 and Fig. A1 in Appendix A).

We used a Bayesian procedure to calibrate the expanded model to the observed epidemiological characteristics of tuberculosis and HIV infection in the United Republic of Tanzania, a country with a high burden of both diseases and a relatively low prevalence of multidrug-resistant tuberculosis.^{17–19} In brief, we

performed 100 000 simulations with parameter values selected randomly from prior distributions of input parameters. A likelihood score was computed for each resulting simulation based on the fit to tuberculosis incidence estimated by the World Health Organization. These 100 000 simulations were resampled (with replacement) 100 000 times, with the probability of selection proportional to the likelihood of each curve. The posterior mode curve (i.e. the curve that was resampled most frequently) was deemed as the best fitting curve after calibration. We present this modal curve in the main analysis (Fig. 2 and Fig. 3). Key model parameters are given in Table 1 (available at: <http://www.who.int/bulletin/volumes/90/10/11-101436>) and model assumptions are listed in Box 1. Appendix A describes in detail the model structure, the prior and posterior ranges of all model parameters and the calibration procedure.

Fig. 2. **Incidence of tuberculosis (all forms) in the United Republic of Tanzania based on WHO estimates and projected incidence based on the calibrated epidemic model**



WHO, World Health Organization.

Note: The green solid line and green dashed lines represent the point estimate and 95% confidence limits of tuberculosis incidence from 1997–2010 as reported by WHO. The black solid line is the most frequently observed trajectory (i.e. the mode) from 100 000 resamples of simulated tuberculosis epidemic curves after calibrating to WHO estimates; this line represents the model output most consistent with the observed trend in tuberculosis incidence. The grey lines represent 1000 random samples from the 100 000 resamples of calibrated tuberculosis epidemic curves. These modelled trajectories (black and grey lines) suggest that the calibration procedure captured the main features of tuberculosis epidemiology in the United Republic of Tanzania.

Outcome measures and analytic methods

Using the calibrated model for the United Republic of Tanzania, we projected the impact of the new, more sensitive tool over that of the existing diagnostic algorithm using smear microscopy, under the assumption that the incidence of HIV infection would remain the same as in 2009. We estimated the average annual decline in pulmonary tuberculosis incidence, prevalence and mortality, and in the annual risk of tuberculosis infection (ARTI) over the ensuing 10 years under the base case scenario of smear microscopy and under the alternative scenario, namely, use of the new diagnostic tool in 2010. We quantified the impact of the new tool by calculating the absolute difference in the annual rate of decline in pulmonary tuberculosis incidence under the base case scenario and the alternative scenario. We also investigated the impact of the new tool on the duration of infectiousness, which directly affects the rate of disease transmission.

To investigate the influence of operational factors on the epidemiologic impact of the new tool, we conducted one-way sensitivity analyses by changing one operational parameter at a time and computing the absolute difference between the average annual rate of decline in pulmonary tuberculosis incidence observed with the new diagnostic tool and that observed with sputum smear microscopy. The ranges of variation of operational parameters were based on the 90% posterior intervals from the 100 000 resamples after Bayesian calibration (Table 2). We also investigated the independent influence of each operational factor on the impact of the new tool by computing the partial rank correlation coefficient from 1000 simulations from the joint prior distribution of all input parameters. The partial rank correlation coefficient measures the correlation between an input parameter and the impact of a new tool while adjusting for the influence of all other input parameters.²⁷ We

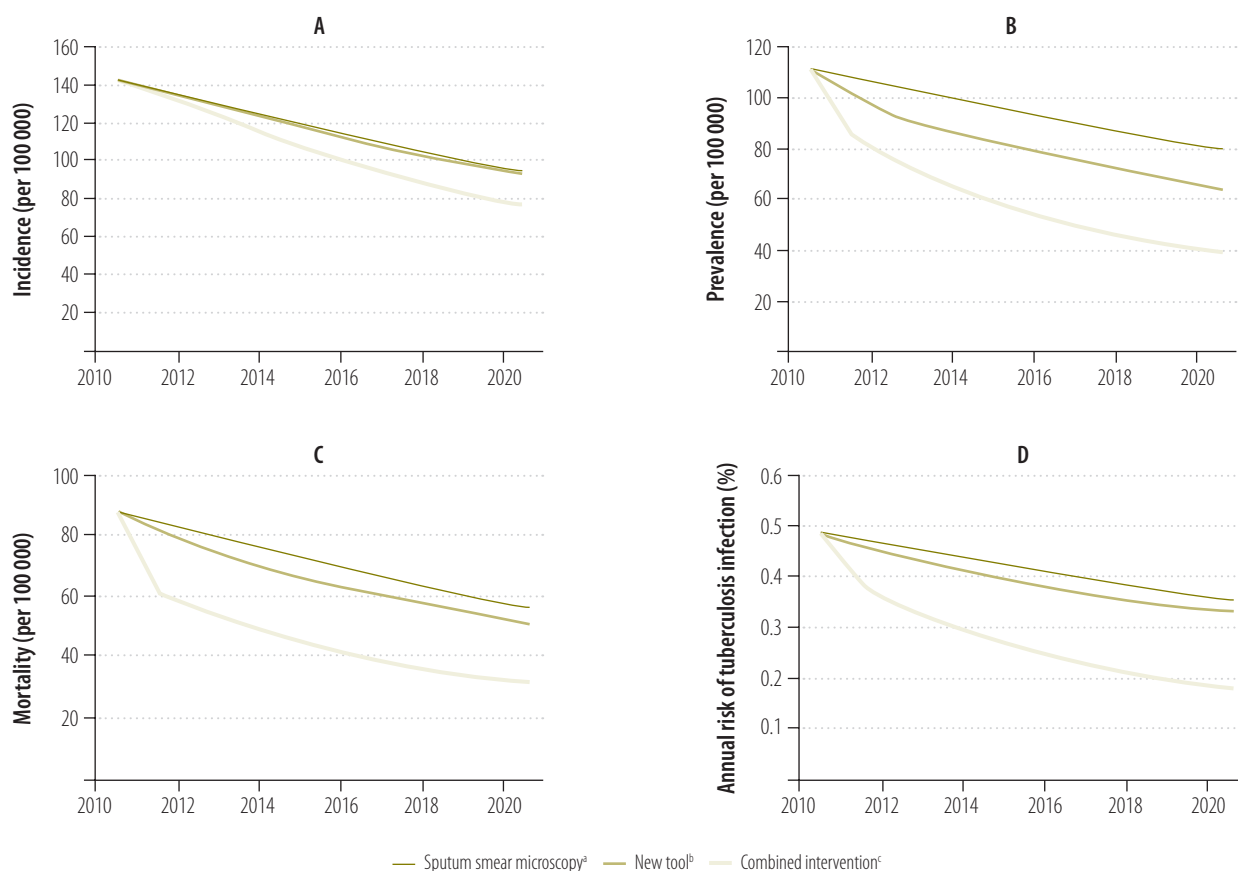
conducted uncertainty analysis on the absolute difference in the annual rate of decline in pulmonary tuberculosis incidence using 1000 random samples from the 100 000 posterior resamples. The 95% credible intervals came from the 25th and the 975th values among the 1000 simulations. We used Berkeley Madonna version 8.3.18 (University of California at Berkeley, Berkeley, United States of America) for model simulations and R version 2.11.1 (The R Foundation for Statistical Computing, Vienna, Austria) for statistical analysis.^{28,29}

Results

Under the base case scenario of smear microscopy, the incidence of pulmonary tuberculosis would continue to decline in the United Republic of Tanzania because of sustained case detection and treatment. Over a 10-year horizon, pulmonary tuberculosis incidence, prevalence and mortality and ARTI would decline by an annual average of 3.94%, 3.31%, 4.41%, and 3.11%, respectively (Fig. 3). We projected that with use of the new diagnostic tool the burden of pulmonary tuberculosis would decline faster than with continued use of smear microscopy. Under a reference case operational context (corresponding to the modal values of the operational parameters in Table 2), the projected average annual declines in pulmonary tuberculosis incidence, prevalence and mortality and in ARTI would be 4.25%, 5.07%, 5.27% and 3.89%, respectively (Fig. 3). Thus, the new tool is associated with an additional average annual decline in the incidence of pulmonary tuberculosis of 0.31 percentage points (0.04–0.42), and with additional average annual declines in prevalence, mortality and ARTI of 1.77 percentage points (95% credible interval, CI: 0.33–2.30), 0.86 percentage points (95% CI: 0.09–1.97) and 0.78 percentage points (95% CI: 0.12–1.07), respectively. Owing to improved sensitivity and early case detection, the new tool reduces the period of infectiousness from 10.4 months to 9.1 months on average.

One-way sensitivity analyses suggested that the additional annual decline in the incidence of pulmonary tuberculosis is strongly influenced by the sensitivity of the existing diagnostic strategies used to retest those whose initial test results are negative (Fig. 4). When the

Fig. 3. Projected incidence, prevalence and mortality trends for pulmonary tuberculosis and annual risk of latent tuberculosis under three diagnostic scenarios^a



^a Scenario I: sputum smear microscopy under the reference case operational context (corresponding to the mode values of operational parameters in Table 2).

^b Scenario II: use of the new tool (with 70% sensitivity for smear-negative disease) to replace sputum smear microscopy in Scenario I.

^c Scenario III: use of the new tool in combination with other interventions that shorten the average patient delay and increase access to care and treatment success rate (with parameter values corresponding to the 90% posterior limits in Table 2).

Box 1. Model assumptions

- Sputum smear as initial baseline test is replaced by novel diagnostic.
- There is a single diagnostic attempt during the patient's disease course with no repeat diagnostic attempts.
- There is no multidrug-resistant tuberculosis.
- The incidence of HIV infection in the target country stays at the 2009 level during the period of analysis.
- Individuals show homogeneous mixing in the population.

HIV, human immunodeficiency virus.

existing diagnostic strategy was highly sensitive for smear-negative cases (e.g. X-ray or clinical suspicion), the improvement offered by the new, more accurate diagnostic tool was less impressive. A long delay in seeking medical attention after the onset of symptoms also reduced the epidemiologic impact of the new diagnostic tool (Fig. 4) because of prolonged transmissibility. Variations in other operational factors (e.g. level of access to tuberculosis diagnosis and treatment, rate of diagnostic default

among patients testing positive, rate of initial (i.e. post-diagnostic) default and treatment success rate) also affected the impact of the new tool on tuberculosis incidence in the direction anticipated (Fig. 4). The results of the partial rank correlation coefficient analysis were consistent with those of the one-way sensitivity analysis (Fig. 4).

Following the one-way sensitivity analysis, we attempted to identify the types of operational settings in which the diagnostic tool was expected to de-

liver the greatest average annual decline in the incidence of pulmonary tuberculosis. To achieve this we sequentially tuned the operational parameters to the values that yielded the greatest impact on disease incidence, beginning with the parameter shown to exert the greatest influence in the one-way sensitivity analysis. We found that the greatest additional annual decline in the incidence of pulmonary tuberculosis (0.57%) would be achieved if the new diagnostic tool were used in settings that fulfilled all of the following conditions: prompt care seeking after symptom onset, an existing diagnostic strategy with poor sensitivity and full (99%) access to tuberculosis care (with parameter values corresponding to the 90% posterior limits in Table 2).

In addition to assessing the impact of a new, more sensitive diagnostic tool, we conducted iso-effect analyses to identify how a similar incremental benefit could be attained with other interventions. To this end we increased

Table 2. **Modes and value ranges for operational parameters investigated in the one-way sensitivity analysis in a study of the impact of new tuberculosis diagnostics on transmission**

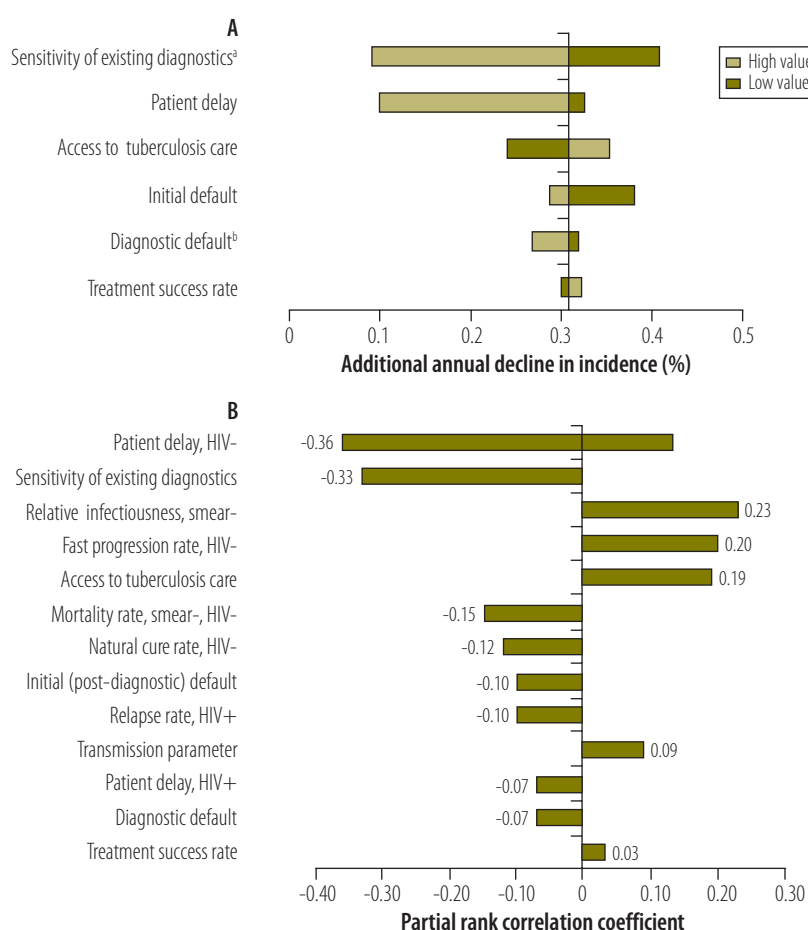
Parameter	Low ^a	Mode	High ^a
Patient delay, HIV-negative (months)	1.7	2.0	15.6
Patient delay, HIV-positive (months)	1.3	2.0	6.3
Access to care (%)	63	83	99
Diagnostic default (%)	1	5	18
Sensitivity of existing diagnostic strategies for smear-negative cases (%)	13	31	71
Initial (i.e. post-diagnostic) default (%)	1	23	29
Treatment success rate (%)	54	70	96

HIV, human immunodeficiency virus.

^a The low and high values correspond to the 5th and 95th percentile values in the posterior distribution.

Note: The values were obtained from posterior distributions after the Bayesian melding procedure that calibrated the input parameters to the tuberculosis rates observed in the United Republic of Tanzania.

Fig. 4. **Sensitivity analysis on the influence of operational factors on the impact of a sensitivity diagnostic tool on annual decline in pulmonary tuberculosis incidence**



^a Access to and sensitivity of existing diagnostic strategies for smear-negative cases.

^b Lost to follow-up before completion of diagnostic process.

Note: Part A shows the results of the one-way sensitivity analysis of additional annual decline in pulmonary tuberculosis incidence using the values of operational factors from posterior distributions after calibration. The vertical line corresponds to the estimate using the mode values in Table 2, and "High" and "Low" correspond to the estimates using the high and low values in Table 2.

Part B shows the partial rank correlation coefficients obtained with 1000 random simulations from joint prior distribution of all input parameters. Coefficients of the top 10 influential input parameters and those of all other operational parameters are presented.

the standard diagnostic strategy's sensitivity for smear-negative cases from 0% to 70%. Under the best-fitting condition of the calibrated model, it would require any of the following to obtain the same effects as those observed with the new diagnostic tool: shortening the time to care seeking after symptom onset from 2 to 1.2 months; increasing access to tuberculosis care from 83% to 88% of cases; increasing the treatment success rate from 70% to 87%, or decreasing the fraction of initial (i.e. post-diagnostic) defaults from 23% to 16%. We further investigated the impact of joint interventions that included the following components: (i) a new diagnostic tool with 70% sensitivity for smear-negative cases; (ii) a strategy for shortening care-seeking delay after symptom onset to between 1.3 and 1.7 months; (iii) a strategy for increasing access to tuberculosis care to 99%; (iv) a strategy for increasing the treatment success rate to 96% (Table 2). As expected, the combined intervention would have a greater impact on annual decline than any single intervention (Fig. 3).

Discussion

Using an expanded tuberculosis epidemic model that identifies additional stages along a diagnostic pathway, we found the impact of a new, more accurate diagnostic tool on tuberculosis epidemiology to be substantially affected by contextual factors unrelated to tool performance. In particular, the epidemiologic impact of such a tool is greatest in settings where access to tuberculosis care is good (i.e. where symptomatic tuberculosis patients who seek care are likely to obtain it) but existing diagnostic strategies have poor sensitivity (e.g. poor access to chest X-ray for smear-negative cases). Since this may be the scenario in many community-level health centres, it is important to develop diagnostic tests that can be deployed at this level. Furthermore, new diagnostics will have a lesser population-level impact than expected if they are implemented in poorly accessible reference laboratories already equipped with sensitive tools (e.g. culture).

Our projections urge caution, because diagnostic pathways are fraught with inevitable inefficiencies that can make the incremental impact of new diagnostic technologies lower than anticipated. We specifically found that a diagnostic test with 100% sensitivity

for smear-positive tuberculosis and 70% sensitivity for smear-negative tuberculosis would reduce the average annual incidence of pulmonary tuberculosis by a mere 0.31 percentage points in the United Republic of Tanzania. Our findings strongly indicate the need for a comprehensive approach that emphasizes the importance of the operational context of diagnosis and treatment when deciding how to implement and scale up a new diagnostic tool.

Our model illustrates the critical importance played by the duration of infectiousness in tuberculosis transmission. The level of tuberculosis transmission that occurs before patients present to the health-care system varies widely between settings,³⁰ but it limits the degree to which a new, improved diagnostic test deployed in a clinic-based setting (i.e. without concomitant active case-finding efforts) can reduce tuberculosis incidence. The potential capacity of the new tool to reduce incident disease is eroded when patients delay in seeking care. Furthermore, symptom onset may not be a good indicator of the onset of infectiousness. Prevalence studies have shown that as many as two thirds of previously undiagnosed tuberculosis patients reported no symptoms³¹ and that sputum culture results can be positive in asymptomatic patients.³² Thus, decisions to scale up new tuberculosis diagnostics should take into account the results of studies, critically needed, on the fraction of secondary infections that occur before symptomatic patients seek health care and on the impact of the new diagnostics on the time between symptom onset and health care seeking and between initial contact with the health-care system and initiation of tuberculosis therapy.

The epidemiologic impact of a new diagnostic tool will also depend on the accessibility and sensitivity of the existing strategy for diagnosing sputum-smear-negative cases. Few studies have reported on the sensitivity of the strategies commonly employed to diagnose tuberculosis in sputum-smear-negative cases, such as chest X-ray or empirical treatment with antibiotics.³³ Even fewer data are available on access to and use of these strategies when indicated and on the sensitivity of clinical suspicion for the diagnosis of sputum-smear-negative pulmonary tuberculosis. The importance of operational factors (Fig. 4) points to the need to better understand the organization of the health system and to accurately mea-

sure each step of the diagnostic pathway when projecting the overall impact of a new diagnostic.^{9,34,35}

We modelled a new diagnostic tool with improved sensitivity for illustrative purposes only. Introducing such a tool could affect the diagnostic process in several ways. For example, a new test could increase patients' faith in the health-care system and lower physicians' threshold for considering a diagnosis of tuberculosis, which would result in reduced patient and health system delays. A new test with a short turnaround time will reduce the need for multiple visits to the health system and thereby decrease diagnostic default. For example, the result from the new Xpert MTB/RIF assay can be obtained within two hours. Thus, patients can get their test results on the same day. These additional effects of implementing a new tuberculosis diagnostic can have a much greater population impact than simply improving diagnostic sensitivity. Indeed, one could consider the "combined intervention" in our model (Fig. 3) to be a representation of the potential impact of a diagnostic test that not only has greater sensitivity, but that also reduces patient delays and increases access to care through improvements in provider behaviour. This highlights the importance of collecting information on changes in health system practices and patient behaviour following the implementation of a new diagnostic tool. An impact assessment framework that comprehensively evaluates the impact of a new diagnostic at the patient level, the health system level and the population level will serve as a useful guiding tool for policy-makers.^{35,36}

Our epidemic model follows the standard epidemic model of tuberculosis transmission to evaluate the impact of new diagnostics on disease transmission. Unlike most previous epidemic models, ours includes the patient diagnostic pathway and the operational components of the diagnostic process. Thus, it allows the impact of a new tool to be explicitly examined in relation to other potentially important operational factors. Although our statistical approach accounts for uncertainty in parameter values, it does not account for uncertainty in model structure. For example, in our model, we classify tuberculosis patients as either highly infectious (sputum-smear-positive) or less infectious (sputum-smear-negative) and assume that the new tool has a fixed

sensitivity within each state. If, however, the degree of infectiousness is a continuum and the smear-negative category includes some patients who are more infectious than others within the same category, our model could underestimate the impact of the new tool. We also did not vary the diagnostic specificity of the new tool in our analysis. A tool with poor specificity, even if highly sensitive, could undermine the system by overloading facilities with individuals who do not require anti-tuberculosis treatment. A formal cost-effectiveness analysis that takes into account various aspects of impact and the associated costs of a new tool would be valuable to policy-makers.^{9,36}

In conclusion, our model-based quantitative analysis suggests that novel diagnostic tests can have substantial population-level impact on tuberculosis epidemics, but only in certain contexts or in combination with interventions geared towards promoting earlier health-care seeking after symptom onset to reduce the length of the infectious period. It is therefore critical to consider contextual factors such as the sensitivity of existing tests, the degree of access to tuberculosis care and the average time that transpires before care-seeking, in determining when and where novel diagnostics should be scaled up. Although we focused our analysis on diagnostics for tuberculosis screening, the central notion – that implementing diagnostic tools with impressive operating characteristics (e.g. high sensitivity and specificity) does not automatically translate into a large epidemiological impact – should also apply in the case of new, improved tools for diagnosing other infectious diseases. ■

Acknowledgements

We thank Chen-Yuan Chiang, Donald Enarson, Ivor Langley, Gillian Mann and Bertie Squire for valuable discussion during the conduct of the study. We thank Kimberly Powers for technical assistance on model simulations.

Funding: This research was supported, in part, by a United States Agency for International Development (USAID) Cooperative Agreement (TREAT TB – Agreement No. GHN-A-00-08-00004-00). The contents are the responsibility of the authors and do not necessarily reflect the views of USAID.

Competing interests: None declared.

ملخص

أثر التشخيص الجديد للسل على انتقال المرض: لماذا يعتبر السياق مهماً

ويمثل ذلك تغيراً مطلقاً بمعدل 0.31 نقطة مئوية (95٪ فاصل الثقة: 0.04 - 0.42). وعلى الرغم من ذلك، فإن الانخفاض السنوي في انتقال المرض مع استخدام الوسيلة الجديدة أقل عندما تكون الإستراتيجيات الحالية لتشخيص حالات اللطاخة السلبية ذات حساسية عالية، وعندما يتأخر الأفراد الذين تظهر عليهم الأعراض في طلب الرعاية. وتتضمن العوامل السياقية الأخرى المؤثرة إمكانية الحصول على رعاية لمرض السل، وفقد المريض قبل التشخيص، والانقطاع المبني للمريض بعد التشخيص ومعدل نجاح العلاج.

الاستنتاج عند تنفيذ وتعزيز استخدام وسيلة تشخيص جديدة، يجب أن يوضع في الاعتبار السياق التشغيلي الذي يتم فيه التشخيص والعلاج.

الغرض تقدير أثر تشخيص السل الجديد على انتقال السل مع الوضع في الاعتبار العوامل السياقية المعقدة التي يمكن أن تؤدي إلى فقد المريض قبل التشخيص أو العلاج.

الطريقة تم إنشاء نموذج وبائي للسل يحدد خطوات منفصلة على امتداد مسار تشخيص السل. وتمت معايرة النموذج وفق وبائية السل وعدوى فيروس العوز المناعي البشري (HIV) في جمهورية تنزانيا المتحدة، وتم استخدامه لتقييم أثر وسيلة تشخيص جديدة بنسبة حساسية 70٪ للسل الرئوي ذي نتائج لطاخة سلبية. وتم استكشاف تأثير العوامل السياقية على الأثر الوبائي المتوقع لوسيلة التشخيص الجديدة على مدار العقد الزمني التالي لبدء استخدامها.

النتائج باستخدام الفحص المجهرى للطاخات، سوف ينخفض حدوث السل بمتوسط يصل إلى 3.94٪ سنوياً. وفي حالة إضافة الوسيلة الجديدة، سوف ينخفض الحدوث بنسبة 4.25٪ سنوياً.

摘要

结核病新诊断工具对传播的影响：环境为何重要

目的 考虑可能会导致诊断或治疗前患者丢失的复杂环境因素，估计新的结核病诊断工具对结核病传播的影响。

方法 构建了沿结核病诊断途径指定分离步骤的肺结核传染病模型。将模型针对坦桑尼亚联合共和国的结核病和艾滋病病毒 (HIV) 流行病感染进行校准，并使用其评估新的诊断工具的影响，该诊断工具对涂片阴性肺结核病的敏感性为70%。在新诊断工具引入之后十年中其对所预测的流行病学影响方面，探讨了环境因素的影响。

结果 使用涂片镜检，结核病的发病率将平均每年减少

3.94%。如果增加了新的工具，发病率将每年下降4.25%。这代表了0.31个百分点的绝对变化 (95%置信区间: 0.04-0.42)。然而，当涂片阴性病例的现有诊断策略具有较高的敏感性以及症状个体推迟就医时，使用新工具之后每年传播下降速度不会那样高。其他有影响的环境因素包括获得结核医疗服务的途径、诊断前患者丢失、诊断后首诊患者失访和治疗的成功率。

结论 在实施和扩大新诊断工具的使用时，必须考虑诊断和治疗所处的操作环境。

Résumé

Impact des nouveaux diagnostics de la tuberculose sur sa transmission: pourquoi le contexte est important

Objectif Estimer l'impact des nouveaux diagnostics de la tuberculose sur la transmission de la maladie au vu de la complexité des facteurs contextuels qui peuvent conduire au décès de patients avant le diagnostic ou le traitement.

Méthodes Un modèle épidémique de la tuberculose a été établi, définissant les étapes distinctes au cours du processus de diagnostic. Le modèle a été calibré sur l'épidémiologie de la tuberculose et du virus de l'immunodéficience humaine (VIH) en République-Unie de Tanzanie et a été utilisé pour évaluer l'impact d'un nouvel outil de diagnostic offrant une sensibilité de 70% pour la tuberculose pulmonaire négative au frottis. L'influence des facteurs contextuels sur l'impact prévu de l'épidémie par le nouvel outil de diagnostic a été étudiée au cours de la décennie suivant l'introduction.

Résultats Avec l'utilisation de la microscopie des frottis, l'incidence de

la tuberculose diminuera en moyenne de 3,94% par an. Si le nouvel outil est ajouté, cette incidence diminuera à un rythme annuel de 4,25%. Cela représente un changement absolu de 0,31 point (intervalle de confiance de 95%: 0,04 à 0,42). Cependant, la baisse annuelle de la transmission grâce à l'utilisation de ce nouvel outil est moindre lorsque les stratégies existantes du diagnostic des cas à frottis négatif présentent une sensibilité élevée et lorsque les individus symptomatiques retardent leur demande de soins. D'autres facteurs contextuels influents comprennent l'accès aux soins de la tuberculose, le décès de patients avant le diagnostic, une défaillance initiale du patient après le diagnostic et le taux de réussite du traitement.

Conclusion Lors de la mise en œuvre et de l'intensification de l'utilisation d'un nouvel outil diagnostic, le contexte opérationnel dans lequel le diagnostic et le traitement se déroulent doit être pris en considération.

Резюме

Влияние нового средства диагностики туберкулеза на передачу заболевания: почему контекст имеет значение

Цель Оценить влияние нового метода диагностики туберкулеза на передачу заболевания, учитывая комплексные контекстуальные факторы, которые могут привести к потере пациента до диагностики или лечения.

Методы Была разработана эпидемическая модель туберкулеза,

описывающая как отдельные шаги, так и общее направление действий по диагностике туберкулеза. Модель была проверена на эпидемиологии туберкулеза и инфекции вируса иммунодефицита человека (ВИЧ) в Объединенной Республике Танзания и использовалась для оценки влияния нового средства

диагностики с 70%-й чувствительностью к туберкулезу легких с отрицательным мазком мокроты. Было изучено влияние контекстуальных факторов на прогнозируемое эпидемическое влияние нового средства диагностики в течение десятилетия после его внедрения.

Результаты При применении микроскопии мокроты заболеваемость туберкулезом будет снижаться в среднем на 3,94% в год. При введении нового средства заболеваемость будет снижаться ежегодно на 4,25%. Это представляет собой абсолютное изменение величиной 0,31% (95% доверительный интервал: 0,04–0,42). Однако ежегодное уменьшение контагиозности при использовании нового средства будет менее значительным, если

существующие стратегии диагностики случаев туберкулеза с отрицательным мазком мокроты имеют высокую чувствительность или если лица с клиническими проявлениями вовремя не обращаются за медицинской помощью. Другими существенными контекстуальными факторами являются доступность лечения туберкулеза, потеря пациента до диагностирования, изначальное несоблюдение пациентом медицинских предписаний после диагностирования заболевания и эффективность самого лечения.

Вывод При использовании и популяризации нового средства диагностики необходимо учитывать текущий ситуационный контекст, в котором производится диагностика и лечение.

Resumen

El impacto de las nuevas técnicas de diagnóstico de la tuberculosis sobre la transmisión: por qué es importante el contexto

Objetivo Calcular el impacto de las nuevas técnicas de diagnóstico de la tuberculosis sobre la transmisión de la enfermedad dados los factores contextuales complejos que pueden conducir a la pérdida de pacientes antes del diagnóstico o del tratamiento.

Métodos Se construyó un modelo epidémico de la tuberculosis en el que se especificaron los distintos pasos para el diagnóstico de la tuberculosis. El modelo se calibró para la epidemiología de la tuberculosis y del virus de la inmunodeficiencia humana (VIH) en la República Unida de Tanzania y se empleó para evaluar el impacto de una herramienta nueva de diagnóstico con un 70% de sensibilidad para la tuberculosis pulmonar con baciloscopia negativa. Se investigó la influencia de los factores contextuales sobre el impacto epidémico previsto de la herramienta nueva de diagnóstico durante la década siguiente a su introducción.

Resultados Con el examen microscópico de frotis de esputo, la

incidencia de la tuberculosis disminuirá una media de 3,94% anual. Si se añade la herramienta nueva, la incidencia disminuirá un 4,25% anual, lo que representa un cambio absoluto de 0,31 puntos porcentuales (intervalo de confianza del 95%: 0,04–0,42). No obstante, el descenso anual en la transmisión al usar dicha herramienta nueva es menor cuando existen estrategias para diagnosticar los casos de baciloscopia negativa con una sensibilidad elevada y cuando los individuos enfermos se demoran a la hora de buscar asistencia médica. Otros factores contextuales influyentes son el acceso a la atención a los enfermos de tuberculosis, la pérdida de pacientes antes de obtener un diagnóstico, la no asistencia inicial de los pacientes después del diagnóstico y la tasa de éxito terapéutico.

Conclusión Es necesario considerar el contexto operativo en el que el diagnóstico y el tratamiento tienen lugar a la hora de implementar y ampliar el uso de una herramienta nueva de diagnóstico.

References

- Pai M, Minion J, Sohn H, Zwerling A, Perkins MD. Novel and improved technologies for tuberculosis diagnosis: progress and challenges. *Clin Chest Med* 2009;30:701–16. doi:10.1016/j.ccm.2009.08.016 PMID:19925962
- Pai M, Minion J, Steingart K, Ramsay A. New and improved tuberculosis diagnostics: evidence, policy, practice, and impact. *Curr Opin Pulm Med* 2010;16:271–84. PMID:20224410
- Wallis RS, Pai M, Menzies D, Doherty TM, Walzl G, Perkins MD et al. Biomarkers and diagnostics for tuberculosis: progress, needs, and translation into practice. *Lancet* 2010;375:1920–37. doi:10.1016/S0140-6736(10)60359-5 PMID:20488517
- Boehme CC, Nabeta P, Hillemann D, Nicol MP, Shenai S, Krapp F et al. Rapid molecular detection of tuberculosis and rifampin resistance. *N Engl J Med* 2010;363:1005–15. doi:10.1056/NEJMoa0907847 PMID:20825313
- Boehme CC, Nicol MP, Nabeta P, Michael JS, Gotuzzo E, Tahirli R et al. Feasibility, diagnostic accuracy, and effectiveness of decentralised use of the Xpert MTB/RIF test for diagnosis of tuberculosis and multidrug resistance: a multicentre implementation study. *Lancet* 2011;377:1495–505. doi:10.1016/S0140-6736(11)60438-8 PMID:21507477
- Boehme CC, Nabeta P, Henostroza G, Raqib R, Rahim Z, Gerhardt M et al. Operational feasibility of using loop-mediated isothermal amplification for diagnosis of pulmonary tuberculosis in microscopy centers of developing countries. *J Clin Microbiol* 2007;45:1936–40. doi:10.1128/JCM.02352-06 PMID:17392443
- Cuevas LE, Al-Sonboli N, Lawson L, Yassin MA, Arbide I, Al-Aghbari N et al. LED fluorescence microscopy for the diagnosis of pulmonary tuberculosis: a multi-country cross-sectional evaluation. *PLoS Med* 2011;8:e1001057. doi:10.1371/journal.pmed.1001057 PMID:21765809
- Ling DI, Zwerling AA, Pai M. Rapid diagnosis of drug-resistant TB using line probe assays: from evidence to policy. *Expert Rev Respir Med* 2008;2:583–8. doi:10.1586/17476348.2.5.583 PMID:20477293
- Dowdy DW, Cattamanchi A, Steingart KR, Pai M. Is scale-up worth it? Challenges in economic analysis of diagnostic tests for tuberculosis. *PLoS Med* 2011;8:e1001063. doi:10.1371/journal.pmed.1001063 PMID:21814496
- Squire SB, Belaye AK, Kashoti A, Salaniponi FM, Mundy CJ, Theobald S et al. 'Lost' smear-positive pulmonary tuberculosis cases: where are they and why did we lose them? *Int J Tuberc Lung Dis* 2005;9:25–31. PMID:15675546
- Cohen T, Lipsitch M, Walensky RP, Murray M. Beneficial and perverse effects of isoniazid preventive therapy for latent tuberculosis infection in HIV-tuberculosis coinfecting populations. *Proc Natl Acad Sci USA* 2006;103:7042–7. doi:10.1073/pnas.0600349103 PMID:16632605
- Dye C, Garnett GP, Sleeman K, Williams BG. Prospects for worldwide tuberculosis control under the WHO DOTS strategy. Directly observed short-course therapy. *Lancet* 1998;352:1886–91. doi:10.1016/S0140-6736(98)03199-7 PMID:9863786
- Abu-Raddad LJ, Sabatelli L, Achterberg JT, Sugimoto JD, Longini IM Jr, Dye C et al. Epidemiological benefits of more-effective tuberculosis vaccines, drugs, and diagnostics. *Proc Natl Acad Sci USA* 2009;106:13980–5. doi:10.1073/pnas.0901720106 PMID:19666590
- Dowdy DW, Chaisson RE, Maartens G, Corbett EL, Dorman SE. Impact of enhanced tuberculosis diagnosis in South Africa: a mathematical model of expanded culture and drug susceptibility testing. *Proc Natl Acad Sci USA* 2008;105:11293–8. doi:10.1073/pnas.0800965105 PMID:18695217
- Dowdy DW, Chaisson RE, Moulton LH, Dorman SE. The potential impact of enhanced diagnostic techniques for tuberculosis driven by HIV: a mathematical model. *AIDS* 2006;20:751–62. doi:10.1097/01.aids.0000216376.07185.cc PMID:16514306
- Murray CJ, Salomon JA. Modeling the impact of global tuberculosis control strategies. *Proc Natl Acad Sci USA* 1998;95:13881–6. doi:10.1073/pnas.95.23.13881 PMID:9811895
- Alkema L, Raftery AE, Brown T. Bayesian melding for estimating uncertainty in national HIV prevalence estimates. *Sex Transm Infect* 2008;84(Suppl 1):i11–6. doi:10.1136/sti.2008.029991 PMID:18647860
- Joint United Nations Programme on HIV/AIDS [Internet]. Epidemiological Fact Sheet: United Republic of Tanzania. Geneva: UNAIDS; 2011. Available from: <http://www.unaids.org/en/regionscountries/countries/unitedrepublicoftanzania/> [accessed 2 July 2012].

19. *Global tuberculosis control: epidemiology, strategy, financing: WHO report 2009*. Geneva: World Health Organization; 2009.
20. Behr MA, Warren SA, Salamon H, Hopewell PC, Ponce de Leon A, Daley CL et al. Transmission of *Mycobacterium tuberculosis* from patients smear-negative for acid-fast bacilli. *Lancet* 1999;353:444–9. doi:10.1016/S0140-6736(98)03406-0 PMID:9989714
21. Vynnycky E, Fine PE. The natural history of tuberculosis: the implications of age-dependent risks of disease and the role of reinfection. *Epidemiol Infect* 1997;119:183–201. doi:10.1017/S0950268897007917 PMID:9363017
22. Antonucci G, Girardi E, Raviglione MC, Ippolito G. Risk factors for tuberculosis in HIV-infected persons. A prospective cohort study. The Gruppo Italiano di Studio Tubercolosi e AIDS (GISTA). *JAMA* 1995;274:143–8. doi:10.1001/jama.1995.03530020061033 PMID:7596002
23. Rieder HL. *Epidemiologic basis of tuberculosis control*. Paris: International Union Against Tuberculosis and Lung Disease; 1999.
24. Andrews JR, Noubary F, Walensky RP, Cerda R, Losina E, Horsburgh CR. Risk of progression to active tuberculosis following reinfection with *Mycobacterium tuberculosis*. *Clin Infect Dis* 2012;54:784–91. doi:10.1093/cid/cir951 PMID:22267721
25. FitzGerald JM, Grzybowski S, Allen EA. The impact of human immunodeficiency virus infection on tuberculosis and its control. *Chest* 1991;100:191–200. doi:10.1378/chest.100.1.191 PMID:2060342
26. Hughes G, Currie C, Corbett EL. Modeling tuberculosis in areas of high HIV prevalence. In: *Simulation Conference 2006, proceedings for the winter; Monterey, 3–6 December 2006*. pp. 459–65.
27. Sanchez MA, Blower SM. Uncertainty and sensitivity analysis of the basic reproductive rate. Tuberculosis as an example. *Am J Epidemiol* 1997;145:1127–37. doi:10.1093/oxfordjournals.aje.a009076 PMID:9199543
28. R Development Core Team. *R: a language and environment for statistical computing*. Vienna: R Foundation for Statistical Computing; 2008. Available from: <http://www.R-project.org> [accessed 2 July 2012].
29. Berkeley-Madonna: Modeling and Analysis of Dynamic Systems [Internet]. Berkeley: University of California; 2012. Available from: <http://www.berkeleymadonna.com> [accessed 2 July 2012].
30. Sreeramareddy CT, Panduru KV, Menten J, Van den Ende J. Time delays in diagnosis of pulmonary tuberculosis: a systematic review of literature. *BMC Infect Dis* 2009;9:91. doi:10.1186/1471-2334-9-91 PMID:19519917
31. Wood R, Middelkoop K, Myer L, Grant AD, Whitelaw A, Lawn SD et al. Undiagnosed tuberculosis in a community with high HIV prevalence: implications for tuberculosis control. *Am J Respir Crit Care Med* 2007;175:87–93. doi:10.1164/rccm.200606-759OC PMID:16973982
32. Lawn SD, Kerkhoff AD, Wood R. Progression of subclinical culture-positive tuberculosis to symptomatic disease in HIV-infected individuals. *AIDS* 2011;25:2190–1. doi:10.1097/QAD.0b013e32834cda4e PMID:22019818
33. van Cleeff MR, Kivihya-Ndugga LE, Meme H, Odhiambo JA, Klatser PR. The role and performance of chest X-ray for the diagnosis of tuberculosis: a cost-effectiveness analysis in Nairobi, Kenya. *BMC Infect Dis* 2005;5:111. doi:10.1186/1471-2334-5-111 PMID:16343340
34. Evans CA. GeneXpert – a game-changer for tuberculosis control? *PLoS Med* 2011;8:e1001064. doi:10.1371/journal.pmed.1001064 PMID:21814497
35. Mann G, Squire SB, Bissell K, Eliseev P, Du Toit E, Hesselting A et al. Beyond accuracy: creating a comprehensive evidence base for TB diagnostic tools. *Int J Tuberc Lung Dis* 2010;14:1518–24. PMID:21144235
36. Lin HH, Langley I, Mwenda R, Doulla B, Egwaga S, Millington KA et al. A modelling framework to support the selection and implementation of new tuberculosis diagnostic tools. *Int J Tuberc Lung Dis* 2011;15:996–1004. doi:10.5588/ijtld.11.0062 PMID:21740663

Table 1. Selected model parameters and their values in the epidemic tuberculosis model used to study the impact of new tuberculosis diagnostics on transmission

Parameter description	Prior value ^a	Posterior value ^b	Temporal unit	Source for prior values
Transmission parameter, smear-positive (i.e. no. of people that one smear-positive tuberculosis case can infect in 1 year in a completely susceptible population)	5.90 (3.63–9.60)	8.48 (3.24–8.78)	Year	Fitted to the observed tuberculosis epidemic before DOTS implementation ¹⁹
Relative magnitude of transmission parameter, smear-negative (relative to smear-positive tuberculosis)	0.22 (0.15–0.33)	0.17 (0.14–0.29)	Year	Behr et al. 1999 ²⁰
Incidence of HIV infection	Time-varying	Same as prior values	Year	UNAIDS report ¹⁸
Duration of fast latent period	5	Same as prior values	Year	Vynnycky & Fine, 1997 ²¹
Primary progression rate, HIV-negative patient	0.03 (0.0095–0.094)	0.029 (0.014–0.056)	Year	Vynnycky & Fine, 1997 ²¹
Primary progression rate, HIV-positive patient	0.41 (0.32–0.52)	0.36 (0.32–0.52)	Year	Antonucci et al. 1995, ²²
Slow reactivation rate, HIV-negative patient	0.0003 (0.000033–0.0028)	0.00013 (0.000025–0.0016)	Year	Vynnycky & Fine 1997 ²¹
Slow reactivation rate, HIV-positive patient	0.10 (0.05–0.19)	0.08 (0.05–0.19)	Year	Rieder 1999 ²³
Reduction of probability of fast progression after reinfection, HIV-negative patient	0.65 (0.58–0.73)	0.64 (0.56–0.72)	None	Cohen et al. 2006, ¹¹ also consistent with Andrews et al. 2012 ²⁴
Reduction of probability of fast progression after re-infection, HIV-positive patient	0.25 (0.17–0.37)	0.18 (0.17–0.36)	None	Cohen et al. 2006 ¹¹
Percent smear-positive among incident cases of pulmonary tuberculosis, HIV-negative adult	0.70 (0.63–0.77)	0.71 (0.64–0.79)	None	Vynnycky & Fine, 1997 ²¹
Percent smear-positive among incident cases of pulmonary tuberculosis, HIV-positive adult	0.48 (0.39–0.59)	0.41 (0.40–0.54)	None	FitzGerald et al. 1991 ²⁵
Percent smear-positive among incident cases of pulmonary tuberculosis, HIV-negative children	0.17 (0.10–0.28)	0.21 (0.10–0.25)	None	Vynnycky & Fine, 1997 ²¹
Percent smear-positive among incident cases of pulmonary tuberculosis, HIV-positive children	0.10 (0.05–0.19)	0.04 (0.05–0.18)	None	Assumption
Natural cure rate, HIV-negative patient	0.20 (0.13–0.31)	0.33 (0.12–0.33)	Year	Dye et al. 1998 ¹²
Natural cure rate, HIV-positive patient	0.10 (0.05–0.19)	0.14 (0.06–0.22)	Year	Assumption
Death rate of those with active tuberculosis, smear-positive and untreated, HIV-negative patient	0.22 (0.15–0.33)	0.16 (0.14–0.29)	Year	Adapted from Hughes et al. ²⁶
Death rate of those with active tuberculosis, smear-positive and untreated, HIV-positive patient	1.50 (1.34–1.68)	1.55 (1.36–1.67)	Year	Adapted from Hughes et al. ²⁶
Death rate of those with active tuberculosis, smear-negative and untreated, HIV-positive patient	0.19 (0.12–0.30)	0.18 (0.11–0.28)	Year	Adapted from Hughes et al. ²⁶
Death rate of those with active tuberculosis, smear-negative and untreated, HIV-negative patient	1.50 (1.34–1.68)	1.47 (1.37–1.70)	Year	Adapted from Hughes et al. ²⁶
Relapse rate after cure, HIV-negative patient	0.001 (0.00015–0.0067)	0.00073 (0.00015–0.0044)	Year	Cohen et al. 2006 ¹¹
Relapse rate after cure, HIV-positive patient	0.01 (0.0028–0.035)	0.0058 (0.0026–0.037)	Year	Cohen et al. 2006 ¹¹

HIV, human immunodeficiency virus.

^a For prior values, either a log-normal distribution or a uniform distribution was assumed; values presented are means and 90% ranges for a log-normal distribution and lower and upper bounds for a uniform distribution^b For posterior values, the modes and 90% ranges are presented. See also Table 2 for several key operational factors and their posterior values. For a comprehensive list of model parameters, see Appendix A